

2016



2016

2016 1 1 12 31

9D;

: =-7E9

9B/F 36001

94

i i i .TS[kkk.Ua_ .U

88

0532-67773306

0532-80798589

Zagl ZW Va` Y2 TS[kkk.Ua_ .U

i S` Y'g` [2 TS[kkk.Ua_ .U



2017



02

04

66

67

68

70

18

24

28

36

40

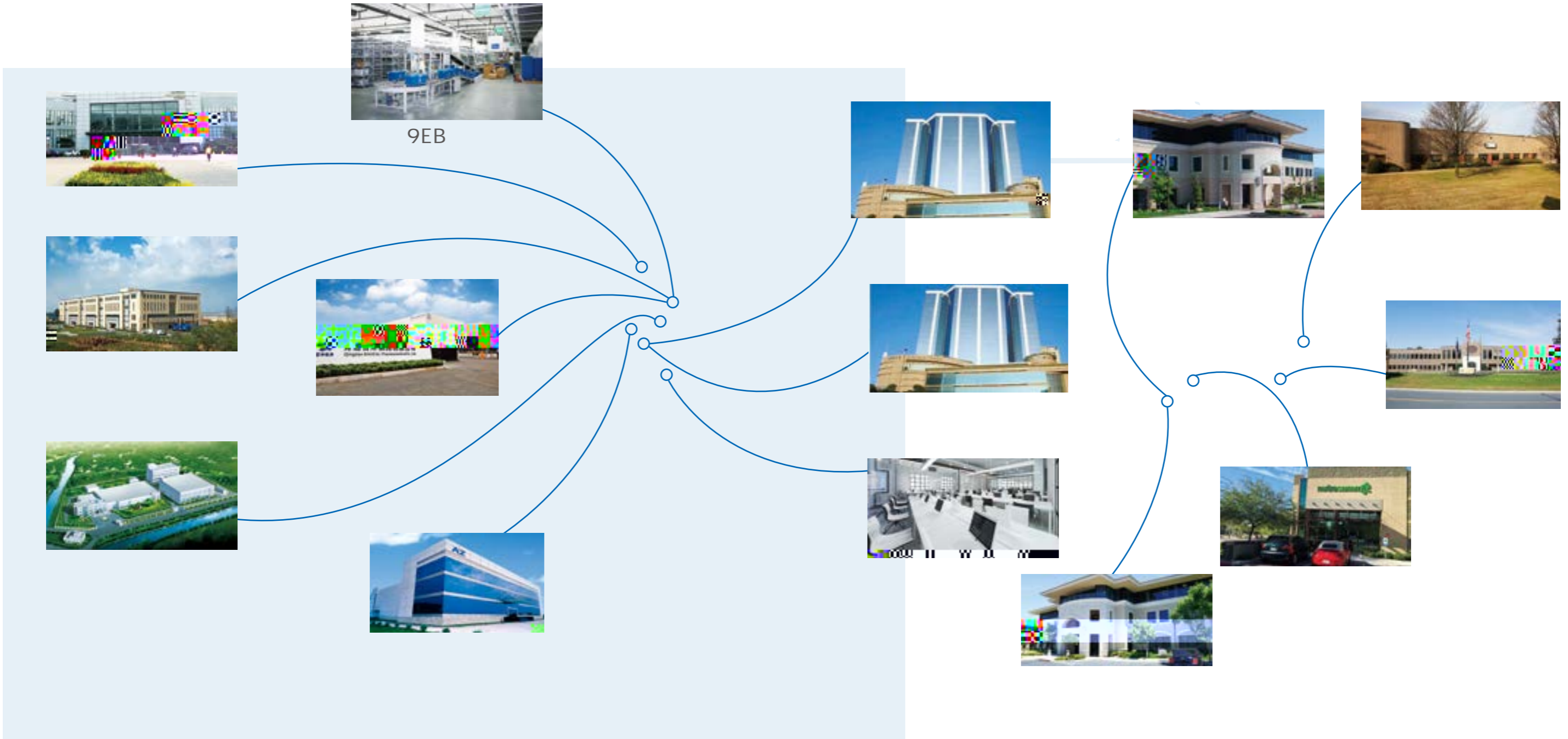
3

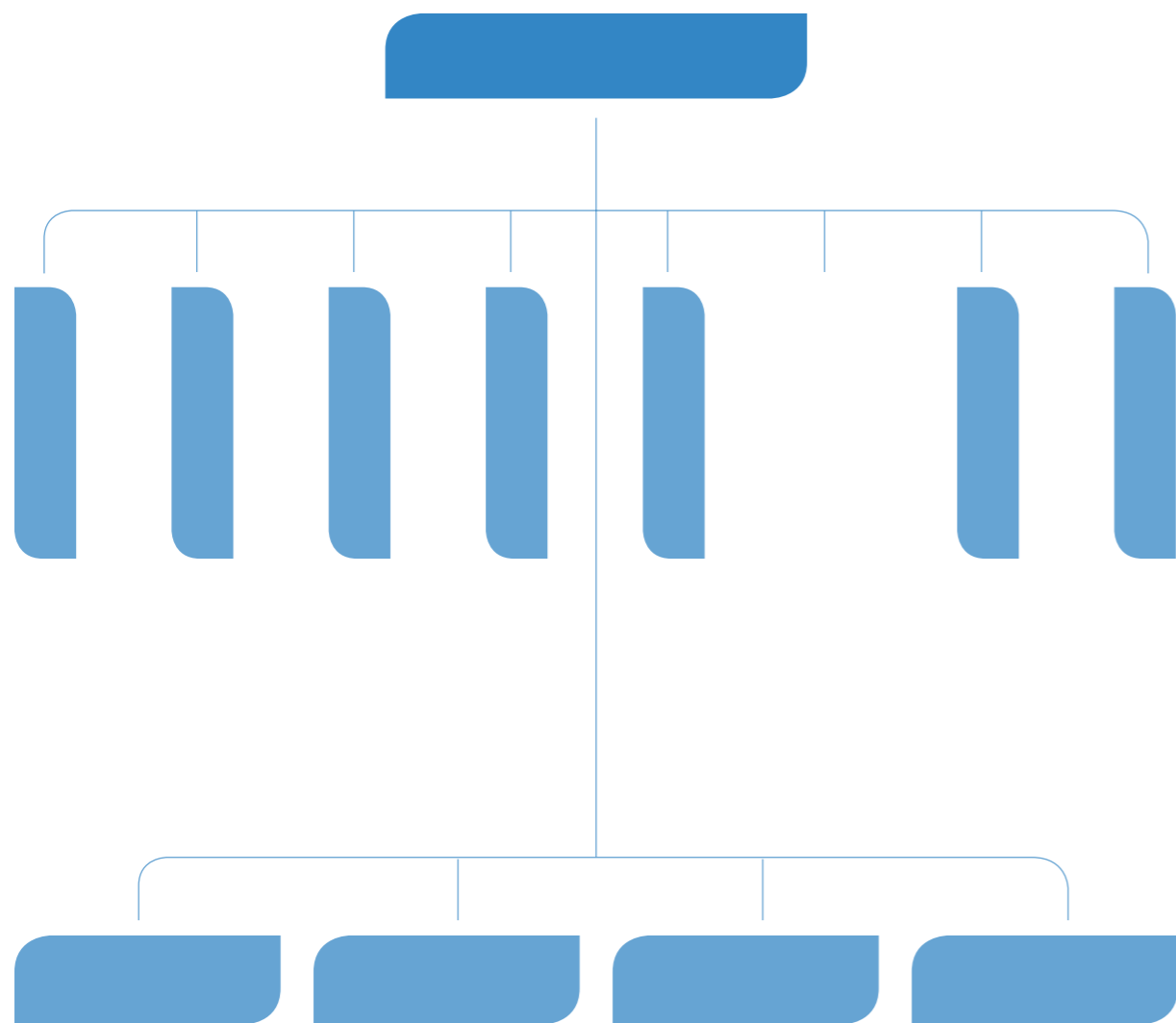


2017

2005

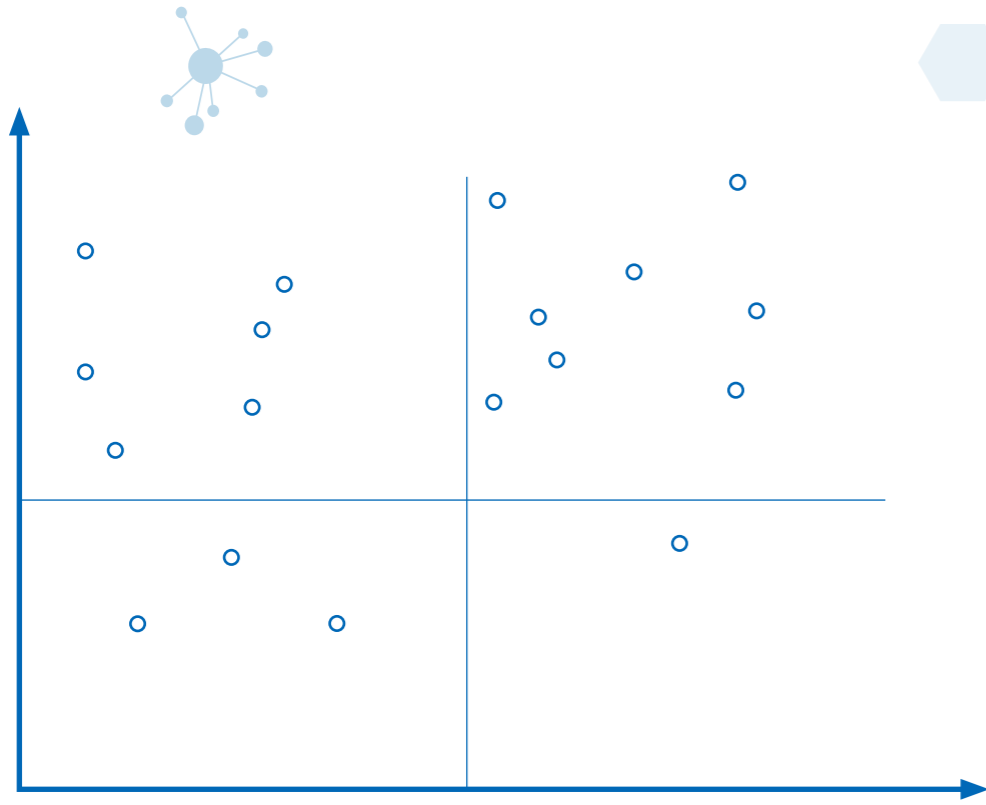






-
-
-
-
-





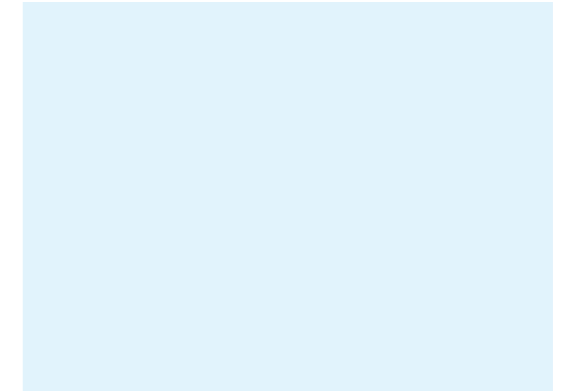
2015-2016



2016



2016



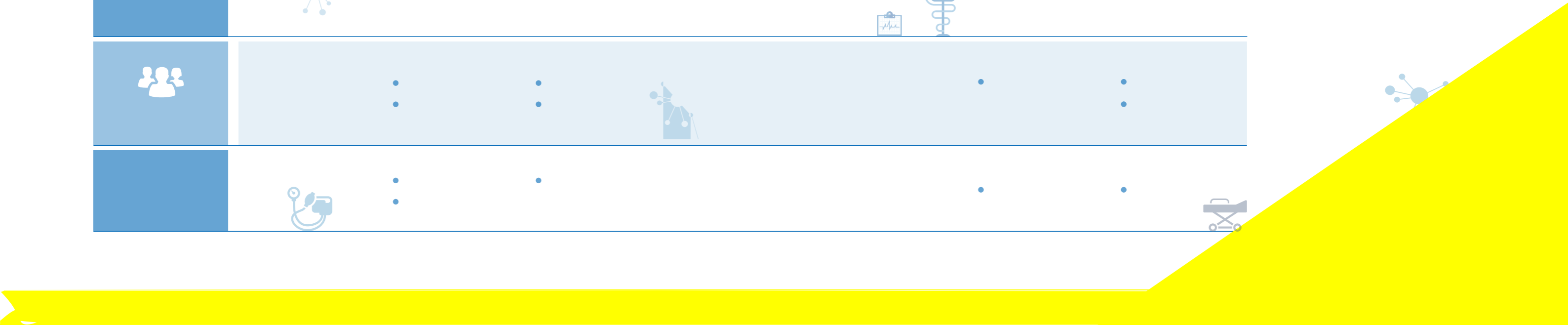
2015

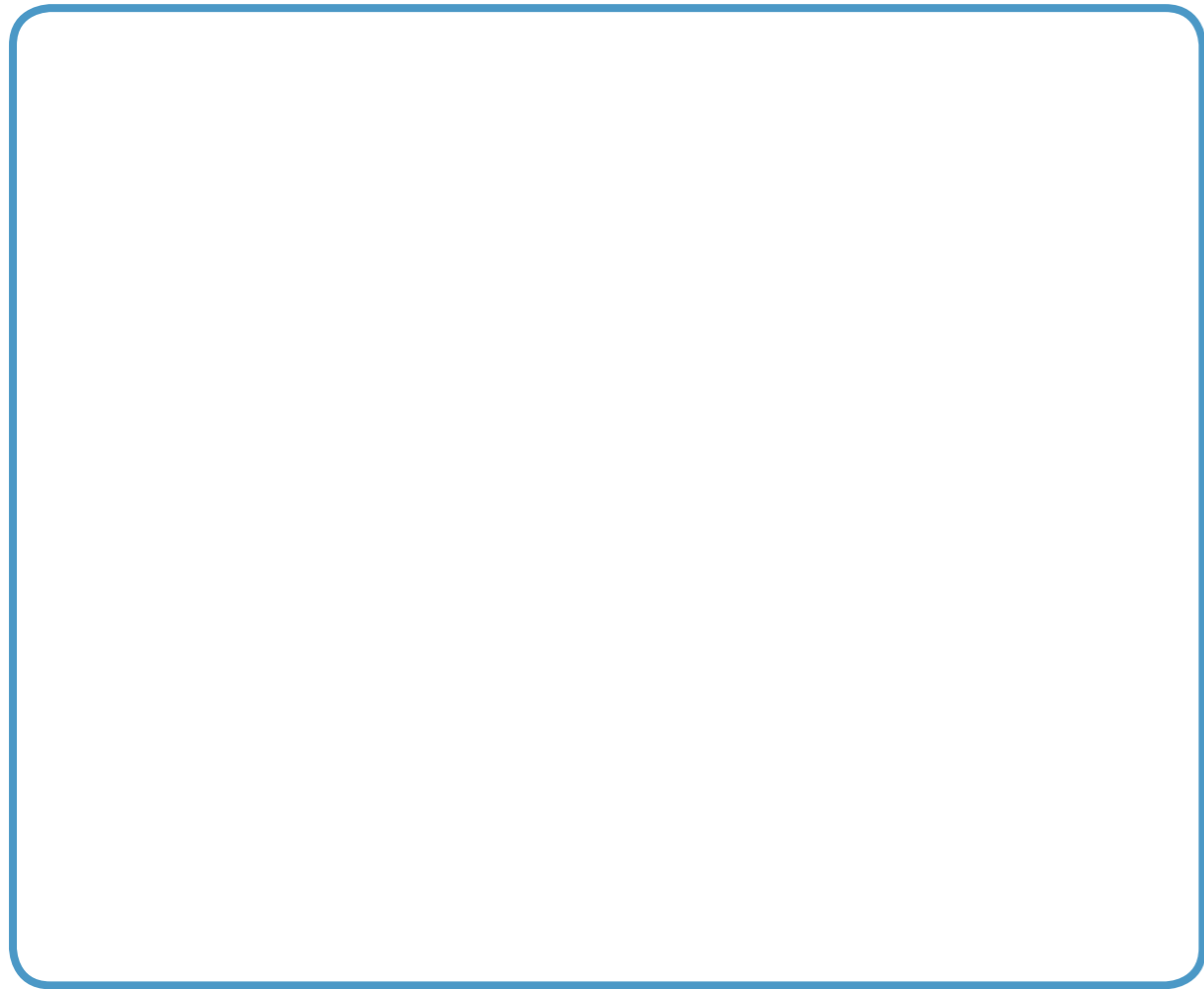


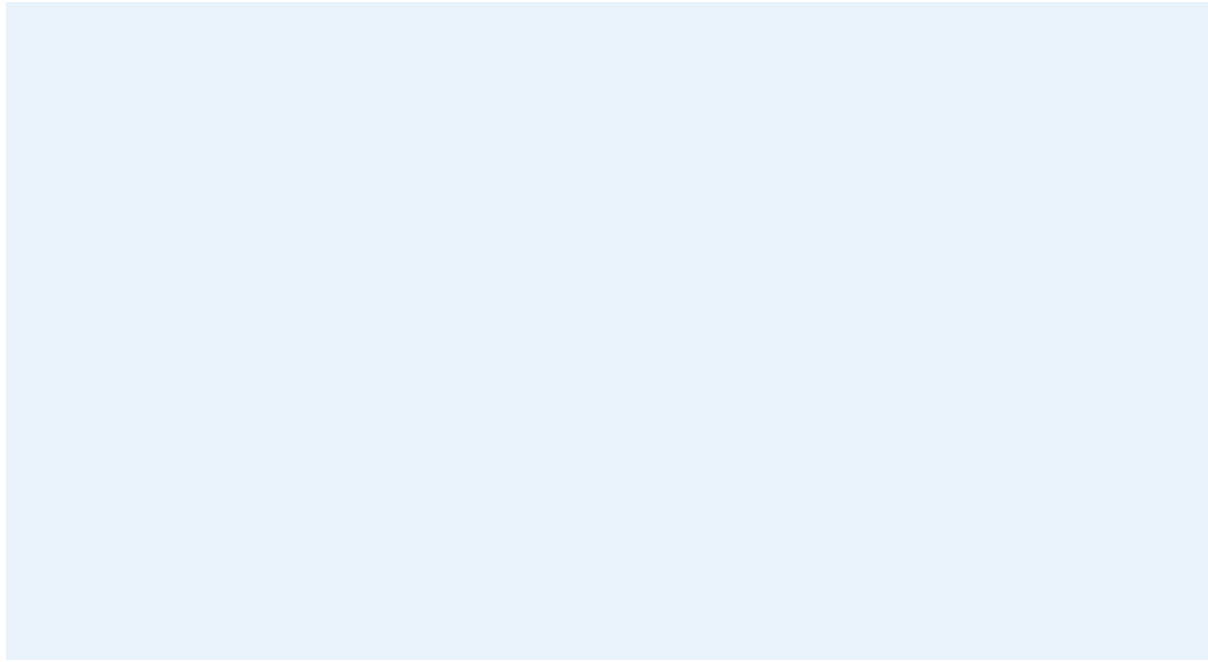
2015



	⋮	⋮		⋮	⋮
	⋮	⋮		⋮	
	⋮	⋮		⋮	⋮
		⋮	⋮		
	⋮	⋮		⋮	⋮
		⋮	⋮	⋮	







50





1.2

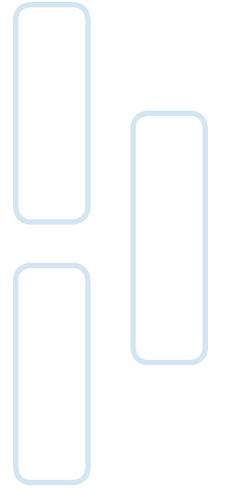
H



+

A 2A

+



智慧·医学·教育



2015

2016

13

37

37

5500







6 16

BBB



-
-
-
-
-
-

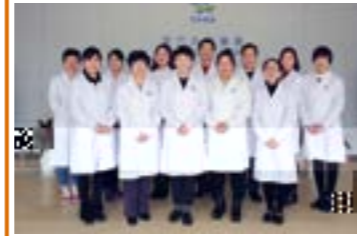
智慧药房



质量保障



专业团队

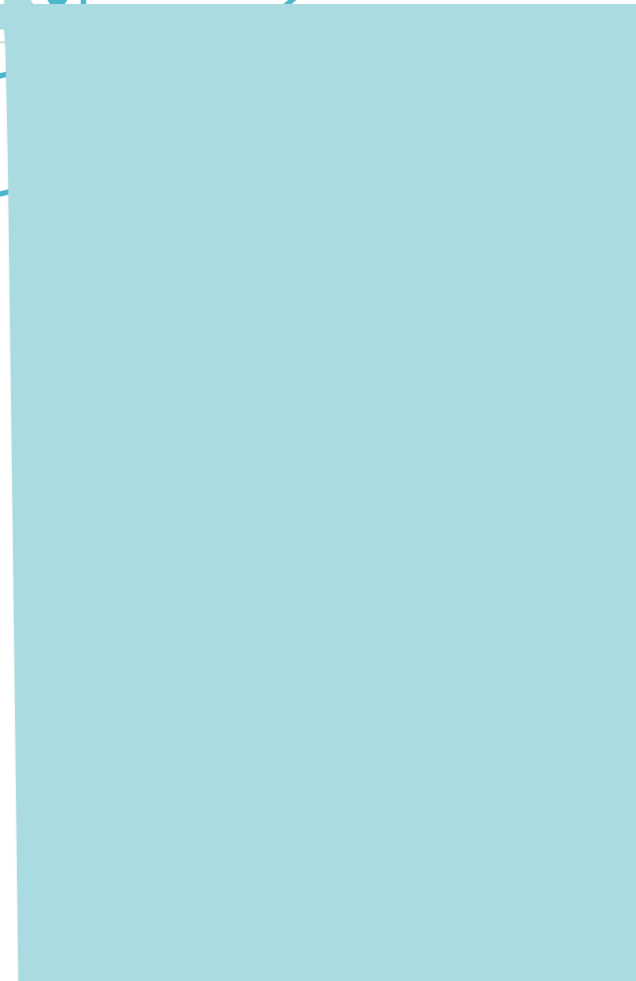
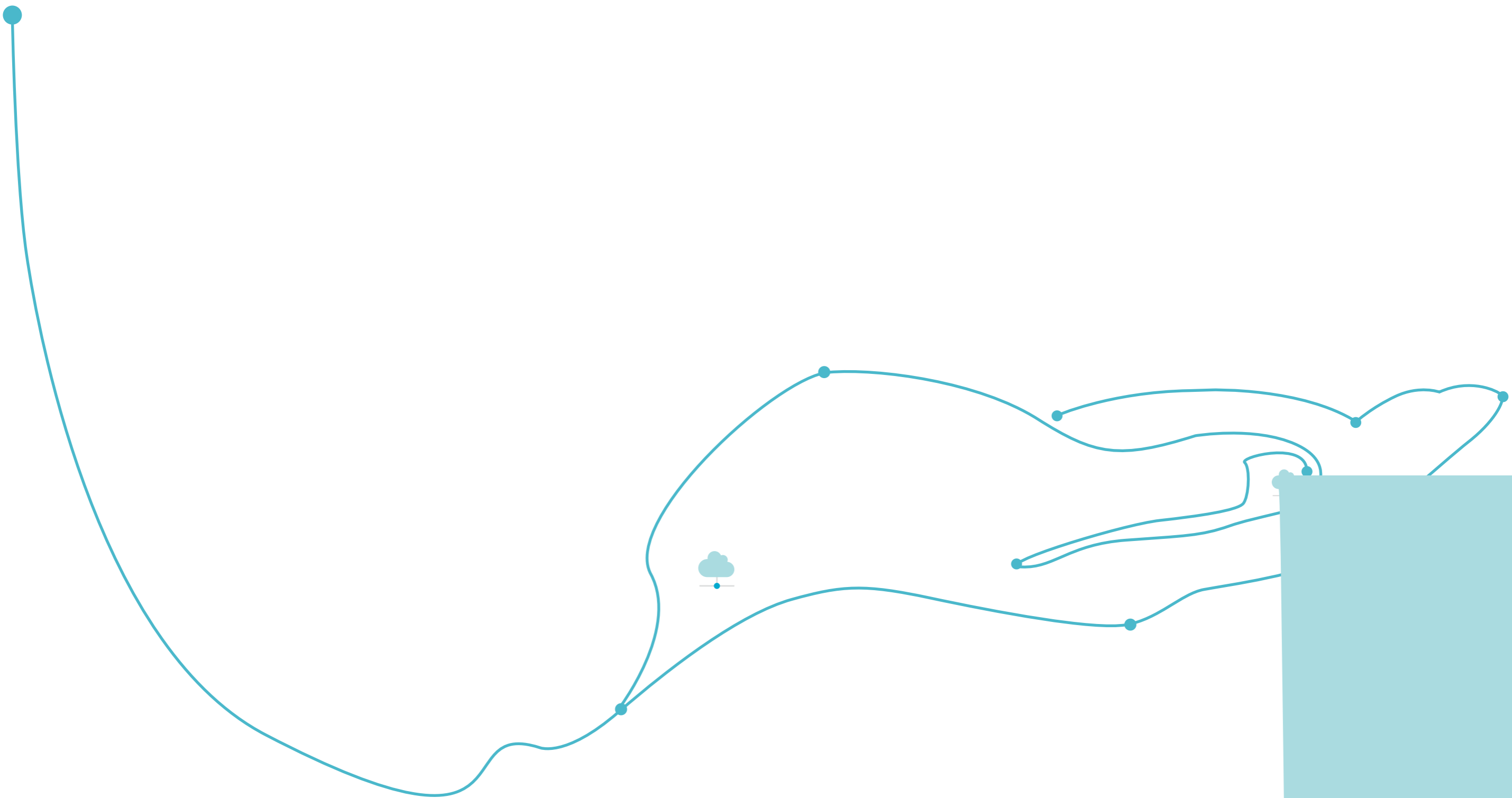






;B? A dSUW

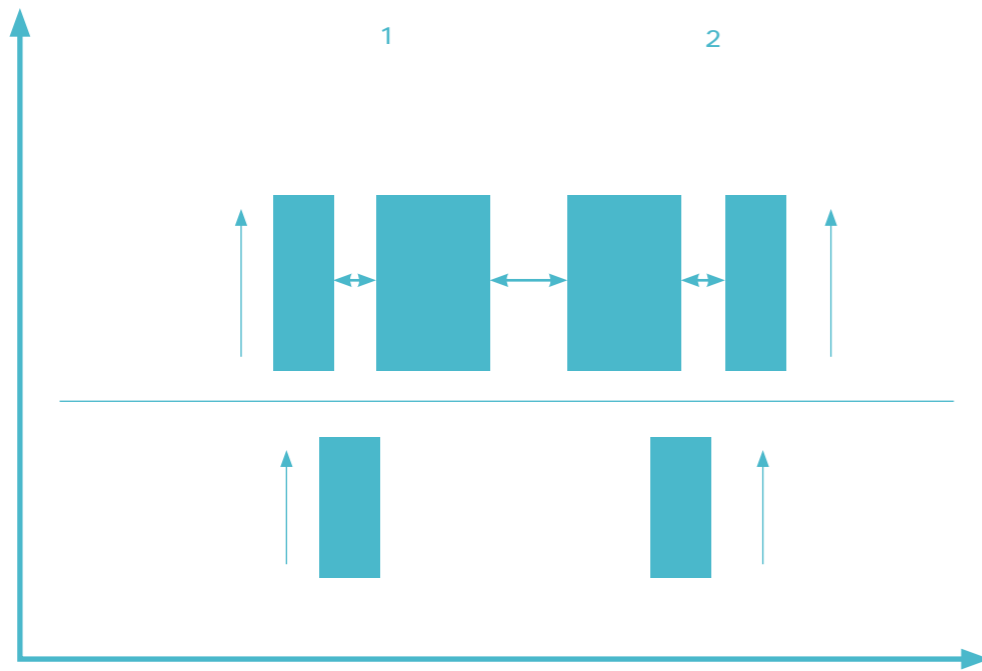








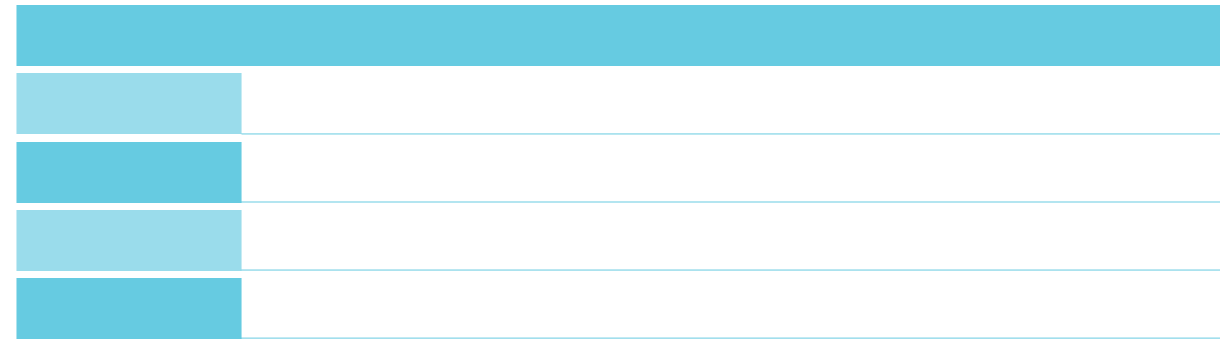
3.2



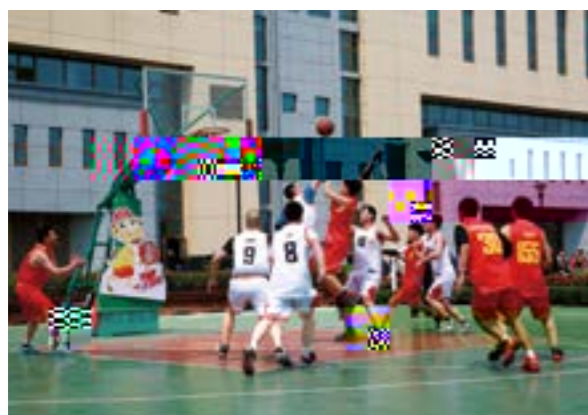
01 02

56550006628808806565500560880888

03 04



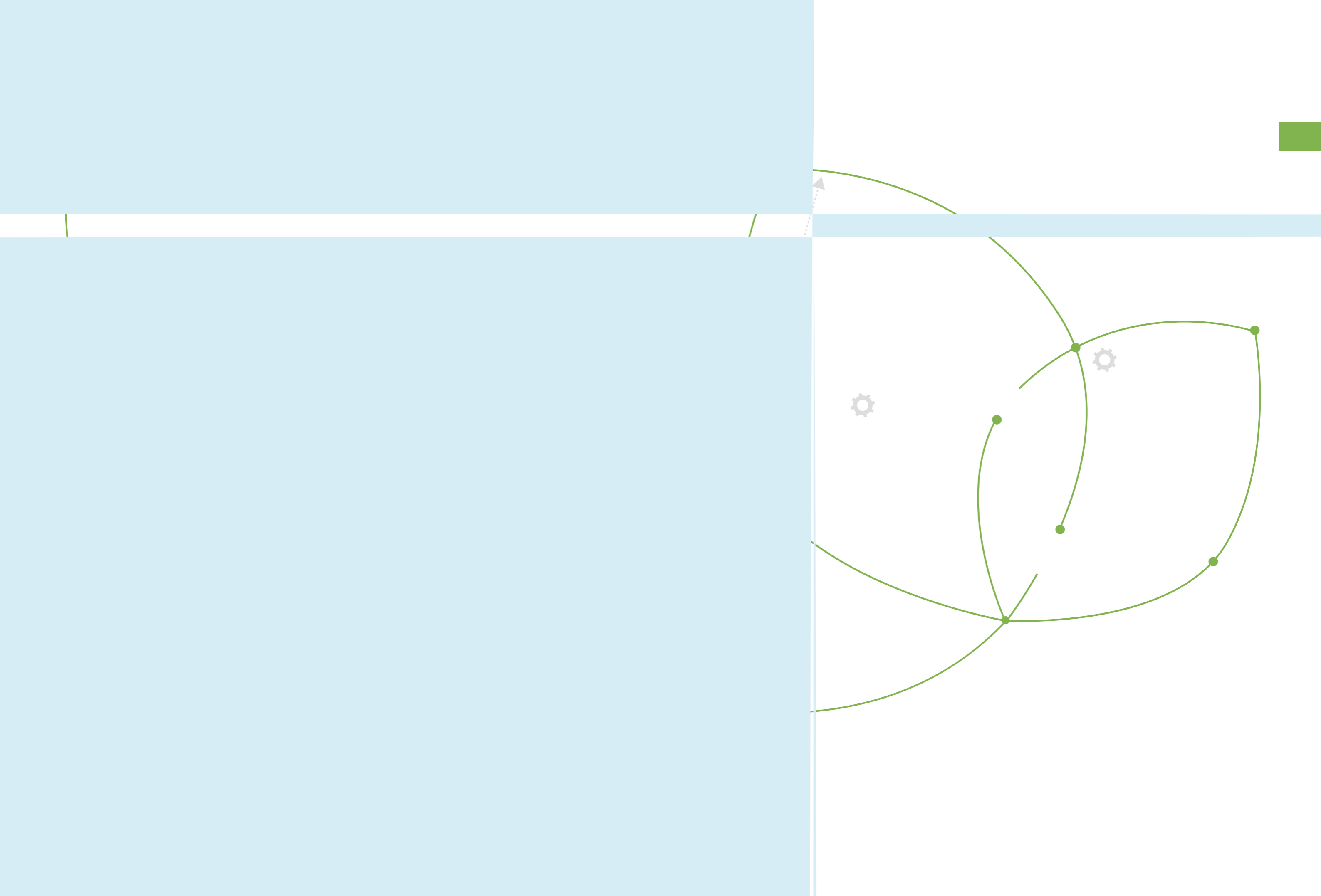
CC

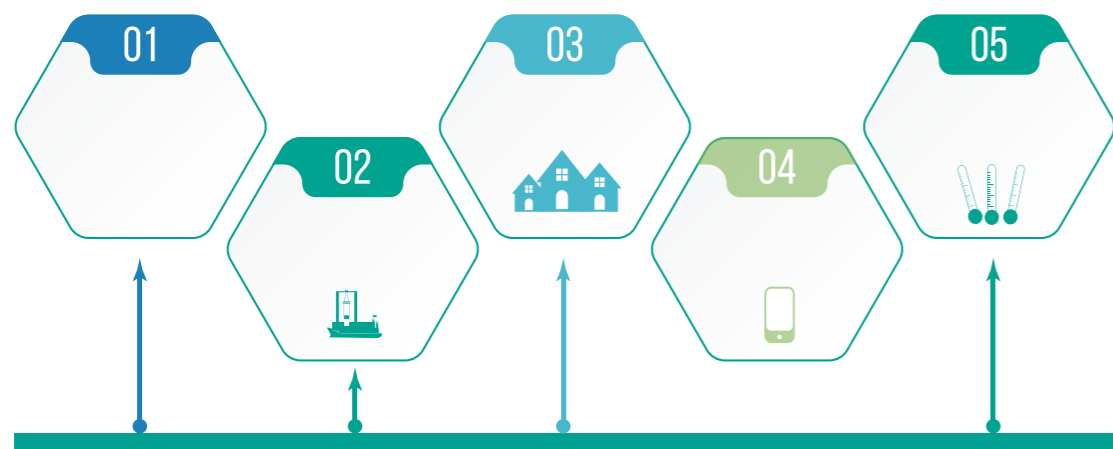


2016 9

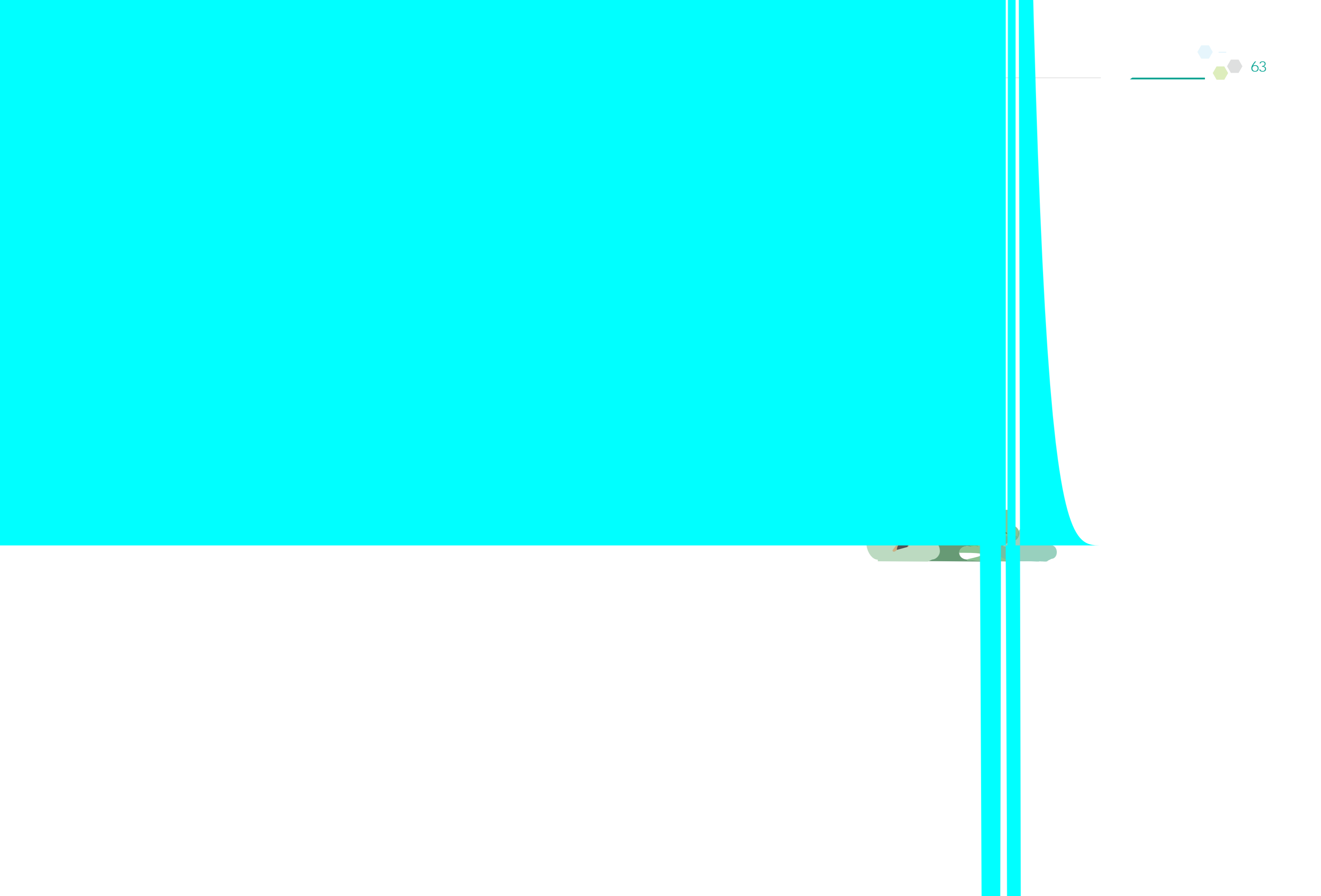
2

50





5.1





	2014	2015	2016
	367,760	398,700	452,687
	18,091	17,591	22,000
/	55.2	77.8	115
/	15	34	48
	40	50	>76 20
	6,421	10,142	10,725
	6,421	10,142	10,725
	0.01	0.5	1.2
	546	507	1,324
	42	44	46

2017

2017

2017

+



;F



	9D;	
94-1		4,5
94-2		4,5,6
94-3		8,9,12,13
94-4		6
94-5		7,8,9
94-6		8,9
94-7		6
94-8		7,8,9
94-9		6,7,8,9
94-10		46
94-11		46
94-12		42
94-15		62,63,64
94-16	/	40
94-17		12,13
94-18		15
94-19		,15
94-20		15
94-21		15
94-23		
94-24		16
94-25		16
94-26		16
94-27		16

2016

- 1. a a a a a
- 2. a a a a a
- 3. a a a a a
- 4. a a a a a
- 5. a a a a a
- 6. a a
- 7. a a
- 8.

9.

